



Naval Facilities Engineering Systems Command,
Pacific
258 Makalapa Drive
Suite 100

MILITARY RELOCATION TO GUAM AND CNMI PROGRAMMATIC AGREEMENT (PA) MEMO #1

Project: P-187 Exclusion Barrier South - Construction

Date: May 12, 2023

Comment Period Open Until:
June 26, 2023

Project Location: Naval Base Guam Telecommunications Site (NBGTS) Finegayan, Guam (Marine Corps Base Camp Blaz)

Prepared By: NAVFAC Pacific

PROJECT SUMMARY:

This submittal proposes construction of an exclusion barrier to limit movement of brown tree snakes, rats, cats, and ungulates such as feral pigs and deer at Naval Base Guam Telecommunications Site (NBGTS) Finegayan, Guam (Marine Corps Base Camp Blaz).

The requirement for this action is stated in the 2015 Biological Opinion for the Department of the Navy's Relocation of the U.S. Marine Corps from Okinawa to Guam and Associated Activities on Guam, and subsequent amendments to this document. The subject proposed project is identified in Appendix E of the 2011 *Programmatic Agreement among the Department of Defense, the Advisory Council on Historic Preservation, the Guam State Historic Preservation Officer, and the Commonwealth of the Northern Mariana Islands State Historic Preservation Officer Regarding the Military Relocation to the Islands of Guam and Tinian* (2011 PA).

In accordance with Stipulation IV.E.2.a., this PA Memo presents information to allow the Guam State Historic Preservation Officer (SHPO) and the public the opportunity to provide comments on the identification and evaluation of historic properties and the finding of effects.

PROJECT LOCATION:

The project is located at NBGTS in Finegayan, Guam. The terrain is a mostly flat, uplifted limestone plateau. The majority of the interior of the island where this project is located is comprised of Mariana Limestone.

The P-187 project will be constructed within the 25.4 acre (10.28 hectare) geographic area designated as the APE for the project (Figure 1).

PROJECT DESCRIPTION:

- 1 This PA Memo is required by Stipulation IV.E.2.a. of the PA as a means for interested members of the public to provide comments on the identification and evaluation of historic properties. Stipulation IV.E.1.b. of the 2011 PA requires the DoD to take into account comments received within 45 days of the date of the delivery of this PA memo to the SHPO and public notification via the CRI website.

Controlled by: Marine Corps Base Camp Blaz
CUI Category: ARCH and HISTP
Distribution/ Limited Dissemination Control: DELIBERATIVE/FEPCON
POC: Albell Boyja (671) 333-1310

As part of the relocation of Marine Corps forces from Japan to Guam, natural resources conservation mitigation includes measures that contribute to the recovery of threatened and endangered species. As part of these measures, the Department of Defense (DoD) is establishing a forest enhancement area that requires a multi-species barrier to keep brown tree snakes and other non-native species, including ungulates, out of the area where forest enhancement activities will be occurring.

The project includes access pathways and an irrigation pipeline for natural resources outplanting efforts. The predator exclusion barrier will require limited surface grading to prepare concrete footings, a pad, and clear spaces. Site grading may be required to accommodate the footings and cleared buffer areas associated with the barrier. There will be gates installed for natural resources personnel to enter for monitoring and propagation of desired species.

IDENTIFICATION OF HISTORIC PROPERTIES:

The 2011 PA describes the overall efforts taken to identify historic properties in Stipulation IV, including archival research, oral studies, and interviews. Archaeological survey has been conducted for the vast majority of the P-187 project-specific APE. Enclosure 1 is list of references for identification efforts in and near the APE. Regulations do not require survey of an entire APE or identification of all historic properties, and 36 CFR Part 800.4(b)(1) states that a reasonable and good faith effort to carry out appropriate identification efforts shall be made. The 2011 PA directs the PA Memo process to allow for members of the public to provide input on the identification and evaluation of historic properties. The input sought by the process is for the identification of historic properties, and assistance in identifying issues relating to effects of the project on historic properties.

Figure 2 illustrates the scope of survey efforts to identify historic properties. The P-187 exclusion barrier alignment and APE do not contain any identified historic properties; however, historic properties are extant in surrounding areas. Federal confidentiality requirements prohibit public disclosure of the exact nature and location of properties, but generalized descriptions are provided below for greater landscape context. The Guam SHPO is provided additional information on historic properties in Figure 3.

Sites in the vicinity include ceramic sherd artifact scatters dating to the Latte Period. Each of the scatters qualifies for listing in the National Register of Historic Places because they retain integrity and are likely to yield information important to prehistory.

Consistent with the consultation on Forest Enhancement (RC2021-0952), P-187 construction activities will be archaeologically monitored, and two sites within 30 meters of the fence will undergo subsurface testing. The monitor's objective will be to identify and document cultural deposits that may represent a historic property and/or human skeletal remains, including fragmented bone encountered as an isolated find. The monitor shall record subsurface stratigraphy, cultural deposits and archaeological features, collect diagnostic artifacts, and collect global

2 This PA Memo is required by Stipulation IV.E.2.a. of the PA as a means for interested members of the public to provide comments on the identification and evaluation of historic properties. Stipulation IV.E.1.b. of the 2011 PA requires the DoD to take into account comments received within 45 days of the date of the delivery of this PA memo to the SHPO and public notification via the CRI website.

positioning system (GPS) data. Standardized daily monitoring logs shall include all relevant archaeological observations.

In accordance with Stipulation VI.F. of the 2011 PA, the Department of Defense has retained a full-time archaeologist to provide site checks, oversee coordination and execution of the archaeological mitigation measures in the 2011 PA and to provide quality control. This individual is on-staff at MCBCB, and is designated to respond to and report any inadvertent discoveries to the Signatories, Invited Signatories, and Concurring Parties per Stipulation XII of the 2011 PA.

FINDING OF EFFECT:

The results of the DoD's identification efforts indicate that there are historic properties in the vicinity, but not within the APE. Thus, consistent with 36 CFR Part 800.4(d)(1), the project warrants a "no historic properties affected" finding. Precautionary monitoring procedures and other archaeological investigation shall follow procedures of the applicable forest enhancement work plan provided by the Government. In the event that historic properties or archaeological materials are identified during the course of the project, the DON will follow the procedures outlined in the work plan and in Stipulation XI of the 2011 PA. If comments received during the PA Memo process result in new information regarding historic properties, consultation will continue pursuant to the 2011 PA. Otherwise, PA Memo #2 will not be required as there will be no mitigation proposed.

3 This PA Memo is required by Stipulation IV.E.2.a. of the PA as a means for interested members of the public to provide comments on the identification and evaluation of historic properties. Stipulation IV.E.1.b. of the 2011 PA requires the DoD to take into account comments received within 45 days of the date of the delivery of this PA memo to the SHPO and public notification via the CRI website.

Enclosure 1

Pacheco, T., T. Rieth, and R. DiNapoli

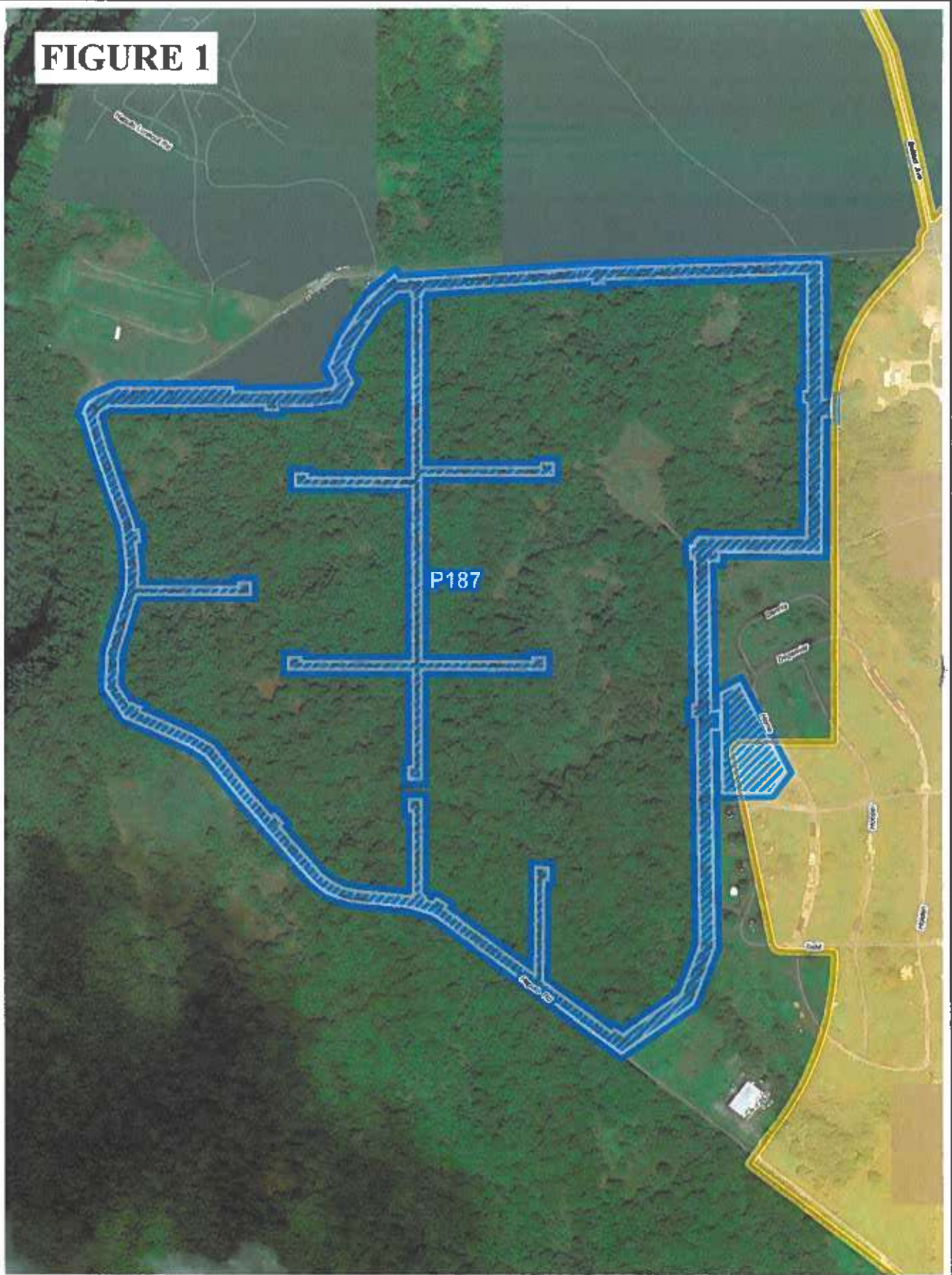
2020 *Archaeological Monitoring in Support of Finegayan Utilities and Site Improvements Phase I, Naval Computer and Telecommunications Station, Guam*. 4 Volumes. Prepared for Department of the Navy, Pacific Division, Naval Facilities Engineering Command, Pearl Harbor, Hawaii. International Archaeological Research Institute, Inc., Honolulu, Hawaii.

Welch, D.

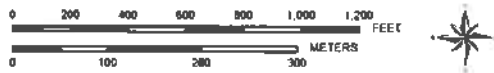
2010 *Archaeological Survey and Cultural Resource Studies Conducted in 2007 on the Island of Guam in Support of the Joint Guam Build-Up Environmental Impact Statement*. 2 volumes. Prepared for Department of the Navy, Pacific Division, Naval Facilities Engineering Command, Pearl Harbor, Hawaii. International Archaeological Research Institute, Inc., Honolulu, Hawaii.

4 This PA Memo is required by Stipulation IV.E.2.a. of the PA as a means for interested members of the public to provide comments on the identification and evaluation of historic properties. Stipulation IV.E.1.b. of the 2011 PA requires the DoD to take into account comments received within 45 days of the date of the delivery of this PA memo to the SHPO and public notification via the CRI website.

FIGURE 1



**Camp Blaz - P-187, BTS Exclusion Barrier South
- PA Memo - Construction Area**





PREPARED BY:
Naval Facilities Engineering Command Pacific Division
Guam Program Management Office
DATE: 09 May 2023



Coordinate System: Geographic
Projection: NAD
Datum: G WGS 1984

Legend

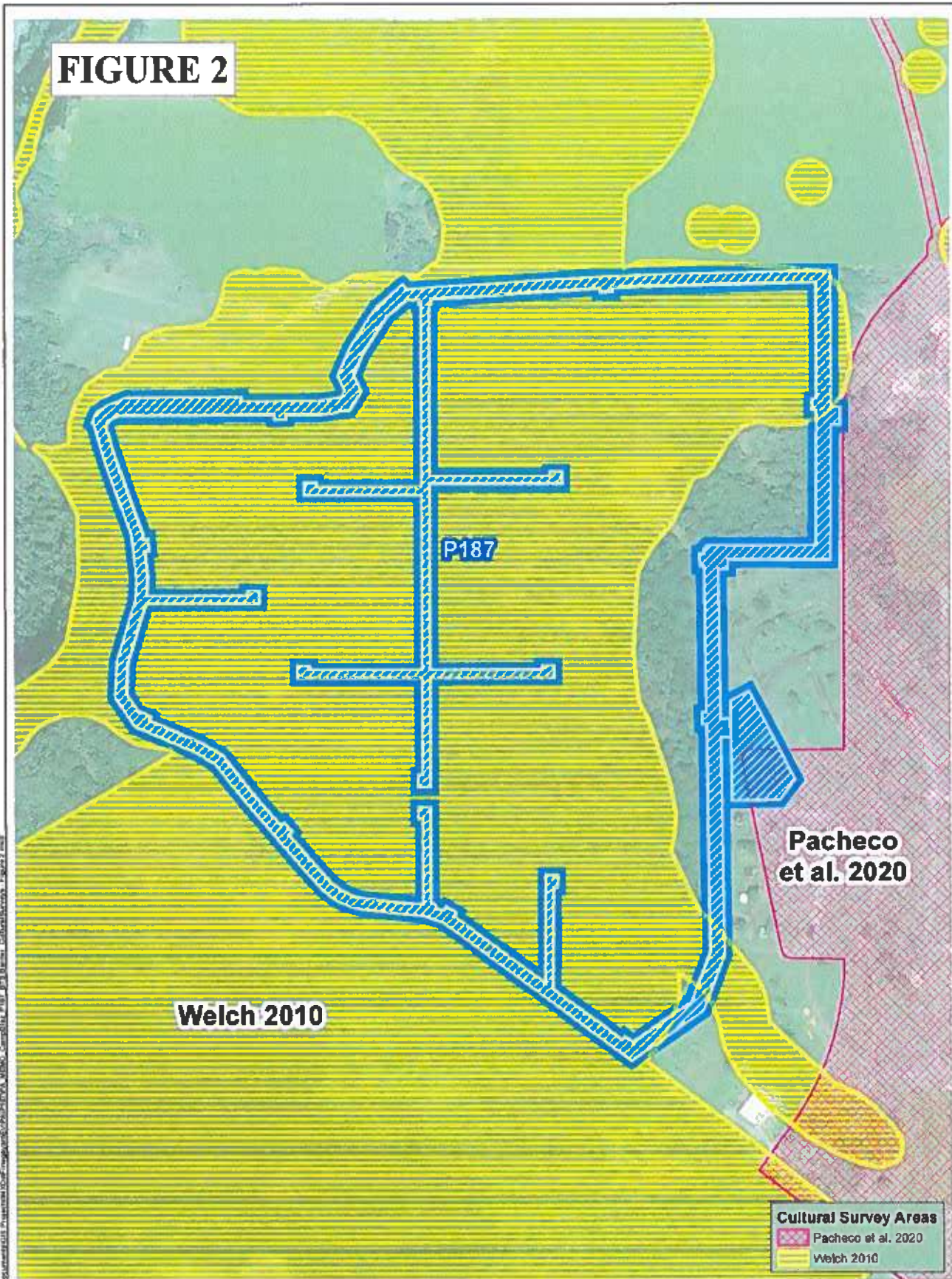
-  P-187 - BTS Exclusion Barrier South - APE
-  PA Memo Area J-001B (2014, 2017, 2021)



MILCON APE
P187 - 25.5 ac.

Date: 5/9/2023 Time: 1:49:21 PM
Path: C:\Users\jgillman\Documents\Projects\CONSTRUCTION\PA Memo\072723\MILCON APE\072723\MILCON APE - P187 - BTS Barrier - CBAPD - Plans 2.dwg

FIGURE 2



**Camp Blaz - P-187, BTS Exclusion Barrier South
- PA Memo - Survey Areas**



PREPARED BY:
Naval Facilities Engineering Command Pacific Division
Civilian Program Management Office
DATE: 05 May 2023



Coordinate System: UTM Zone 66 North
Projection: Transverse Mercator
Datum: O WGS 1984

Legend

- P-187 - BTS Exclusion Barrier South - APE

Cultural Survey Areas

- Pacheco et al. 2020
- Welch 2010



Date: 05/05/2023 Time: 1:00:31 PM
Path: C:\Users\jagp\Documents\Projects\Camp Blaz\PA Memo - Survey Areas - Figure 2.mxd

Military Relocation PA Memo Comment Form

2023

If submitting via **e-mail**, scan and send to: criwebcomment@navy.mil

If submitting via **postal mail**, send to:

Attn: CRI Web Comments
Code EV23, NAVFAC Pacific
258 Makalapa Drive, Suite 100
JPBPH, Hawaii 96860-3134

Submitted comments will be posted on the Navy's Cultural Resources Information (CRI) web site. Information presented on the CRI web site is considered public. The sections highlighted in **red** are required to be completed in order for a comment to be posted.

Privacy Act Statement

Personal information will only be used to contact you regarding the comments you submit. This information will only be shared with another government agency if your inquiry relates to that agency, or as otherwise required by law. We will not create individual profiles or give your information to any private organization. While you must provide a valid e-mail address or postal address, please **DO NOT** include personally identifying information such as a social security number.

By submitting this comment form, you agree not to include content that is offensive in nature, such as profanity, personal attacks on individuals, and racist or abusive language.

PROJECT: P-187 South Predator Exclusion Barrier Construction

SUBJECT: PA Memo#1

Date: _____

Name: _____

CRI User Name (if you don't want your real name to be posted with your comment on the CRI web site):

E-Mail Address: _____

and/or

Postal Mail Address: _____

COMMENTS: _____
