



**Naval Facilities Engineering Systems Command,  
Marianas  
PSC 455, Box 195  
FPO AP 96540-2937**

## **MILITARY RELOCATION TO GUAM AND CNMI PROGRAMMATIC AGREEMENT (PA) MEMO #1**

<b>Project:</b> J-017-V Waterline Interconnect DESIGN STUDIES	<b>Date:</b> July 28, 2022 <b>Comment Period Open Until:</b> September 10, 2022
<b>Project Location:</b> Marine Corps Base Camp Blaz (MCBCB), Finegayan, Guam	<b>Prepared By:</b> NAVFAC Pacific
<b>PROJECT SUMMARY:</b>	
<p>This submittal is for design studies for a proposed interconnected waterline and upgrades to an existing pump facility, a potential new pump facility, and potable water mains to connect existing water wells and a water tank in support of water infrastructure at Marine Corps Base Camp Blaz (MCBCB), Finegayan, Guam. Finegayan is the selected alternative for construction of a cantonment area to support the Guam and Commonwealth of Northern Mariana Islands (CNMI) Military Relocation (the Undertaking).</p> <p>This project was identified after preparation of the Final Environmental Impact Study (FEIS) for the military relocation to Guam and the Commonwealth of the Northern Mariana Islands (CNMI) and Appendix E under various projects of the 2011 <i>Programmatic Agreement (PA) among the Department of Defense, the Advisory Council on Historic Preservation, the Guam State Historic Preservation Officer, and the Commonwealth of the Northern Mariana Islands State Historic Preservation Officer Regarding the Relocation to the Islands of Guam and Tinian.</i></p> <p>In accordance with Stipulation IV.E.2.a., this PA Memo presents information to allow the Guam State Historic Preservation Officer (SHPO) and the public to provide comments on the identification and evaluation of historic properties and the finding of effects.</p>	
<b>PROJECT LOCATION:</b>	
<p>J-017-V is located in northwestern Guam, west of Route 3 and south of the Northwest Field of Andersen Air Force Base within the J-001B U&amp;SI Area of Potential Effects (APE), at Navy Computer and Telecommunications Station, Finegayan, Guam. (Figure 1). The proposed project is partially located within the J-001B Utilities and Site Improvements (U&amp;SI) project area.</p> <p>The project area is on the limestone plateau above the western cliffs of northern Guam. The majority of the interior of the island is comprised of Mariana Limestone, and the southern part of the island is underlain mostly by volcanic rock.</p> <p>The project area is located within the village or municipality of Dededo. Although the general area</p>	

- 1** This PA Memo is required by Stipulation IV.E.2.a. of the PA as a means for interested members of the public to provide comments on the identification and evaluation of historic properties. Stipulation IV.E.1.b. of the PA requires the DoD to take into account comments received within 45 days of the date of the delivery of this PA memo to the SHPO and public notification via the CRI website.

is now commonly referred to as Finegayan or North Finegayan, its pre-World War II name was Machanao.

The APE measures 11.81 hectares (29.2 acres).

#### **PROJECT DESCRIPTION:**

The proposed project includes design studies for an interconnected waterline and upgrades to existing infrastructure to support a new water system. The water system will upgrade an existing pump facility, a potential new pump facility, and potable water mains to connect existing water wells and a water tank. As well as, power and communications system, emergency backup generator, Supervisory Control and Data Acquisition system, and other accessories and appurtenances necessary for proper operation.

Project design study efforts will include topographical surveys and geotechnical surveys. These tasks may require test pits, geotechnical borings of varying depths, mechanized excavation, placement of survey markers, and other ground disturbing activities. The geotechnical field investigation generally entails drilling exploratory borings with a truck-mounted drill rig using 8-inch diameter augers or pipe casing with water or air rotary drilling methods. Exploratory boring depths will vary, but range from 13 –115 feet (4 – 35 meters). The samples are collected for laboratory analysis.

#### **IDENTIFICATION OF HISTORIC PROPERTIES:**

The 2011 PA describes the overall efforts taken to identify historic properties in Stipulation IV, including archival research, oral studies, and interviews. Archaeological survey has been conducted for the vast majority of the J-017-V project-specific APE. Enclosure 1 is a list of references for identification efforts in and near the APE. Regulation does not require survey of an entire APE or identification of all historic properties, and 36 CFR Part 800.4(b)(1) states that a reasonable and good faith effort to carry out appropriate identification efforts shall be made. The 2011 PA directs the PA Memo process to allow for members of the public to provide input on the identification and evaluation of historic properties. The input sought includes knowledge on specific historic properties not yet identified by previous efforts, and assistance in identifying issues relating to effects on historic properties.

Figure 2 illustrates the scope of survey efforts to identify historic properties. Archaeological studies identified the presence of historic properties in the J-001B APE. The J-001B U&SI project mitigated historic properties as stipulated in the 2011 PA. Subsequently, the 2018 resolution agreement between the Navy and Guam SHPO implemented monitoring and archaeological investigation for discoveries identified during J-001B U&SI activities. The historic properties that are present within the APE will no longer be extant once mitigation is complete (i.e., qualifying characteristics will have been altered and the integrity diminished).

In accordance with Stipulation VI.F. of the PA, the DoD has retained a full-time Archaeologist to provide site checks, oversee coordination and execution of the archaeological mitigation measures in the PA and to provide quality control. The 2018 Resolution Agreement also requires the

**2** This PA Memo is required by Stipulation IV.E.2.a. of the PA as a means for interested members of the public to provide comments on the identification and evaluation of historic properties. Stipulation IV.E.1.b. of the PA requires the DoD to take into account comments received within 45 days of the date of the delivery of this PA memo to the SHPO and public notification via the CRI website.

Department of the Navy (DON) to notify the Guam SHPO of any new discoveries and evaluate these discoveries to assess effects.

**FINDING OF EFFECTS:**

The DoD finds that no historic properties will be affected by performing design efforts associated with J-017-V. In the event that historic properties or archaeological materials are identified during the course of the project, the DON will follow the procedures outlined in Stipulation XI of the 2011 PA. If comments received during the PA Memo process results in new information regarding historic properties, consultation will continue pursuant to the 2011 PA. Otherwise, PA Memo #2 will not be required as there will be no mitigation proposed for design studies.

---

**3** | This PA Memo is required by Stipulation IV.E.2.a. of the PA as a means for interested members of the public to provide comments on the identification and evaluation of historic properties. Stipulation IV.E.1.b. of the PA requires the DoD to take into account comments received within 45 days of the date of the delivery of this PA memo to the SHPO and public notification via the CRI website.

**Enclosure 1**

Athens, J.S.

2009 *Final Archaeological Surveys and Cultural Resources Studies on Guam and the Commonwealth of the Northern Mariana Islands in Support of the Joint Guam Build-Up Environmental Impact Statement Volume I: Guam*. Prepared by International Archaeological Research Institute, Inc. Honolulu, HI.

Church, M.K., J.H. Hokanson, J.D. Gallison, and M.H. Jennings

2009 *Cultural Resources Survey of 297 Acres at Andersen Air Force Base, Guam, Contract Number F41924-03-D-8599, Task Order 0031*. Prepared for David T. Lotz, Environmental Flight, Andersen Air Force Base, Guam. e2M Engineering Environmental Management, Inc., Englewood, Colorado.

Dixon, B. and S. Walker

2011 *Cultural Resource Investigations Conducted in the Territory of Guam Supporting the Joint Guam Build-Up Environmental Impact Statement: Final Archaeological Surveys on Guam 2009 at Proposed Utility Sites, Harmon Property, and Andersen AFB*. Prepared for Naval Facilities Engineering Command, Pacific Division, Pearl Harbor, Hawaii. TEC Inc., Honolulu, Hawaii.

Dixon, Boyd, S. Walker and R. Schaefer

2011 *Final Report Cultural Resource Investigations Conducted in the Territory of Guam Supporting the Joint Guam Build-Up Environmental Impact Statement: Final Archaeological Surveys on Guam 2010 on Andersen AFB*. Prepared by the Naval Facilities Engineering Command, Pacific Division, by TEC Inc.

Dixon, B., T. Rudolph, A. Jalandoni, I. Nelson, M. Hroncich-Conner, S. Leary, R. Schaefer, E. Lash, M. Todd

2015 *Proposed Guam and CNMI Military Relocation 2012 Roadmap Adjustments SEIS Live-Fire Training Range Complex Footprints, Main Cantonment, Utilities, Communications, Well Field Alternatives and Access Route Options Volume I: Potential Direct Impact Area In-Fill Cultural Resources Study Narrative*. Prepared for Naval Facilities Engineering Command Pacific, Pearl Harbor, Hawaii. Cardno TEC, Inc., Honolulu, Hawaii.

Dixon, B., D. Welch, T. Rudolph, R. Jones, and I. Nelson

2018 *Archaeological Data Recovery in Support of the J-001B Utilities and Site Improvements at Naval Base Guam Telecommunications Site, Guam* Prepared for Naval Facilities Engineering Command Pacific, Pearl Harbor, Hawaii. Cardno TEC, Inc., Honolulu, Hawaii.

Haun, Alan E.

1988 *Archaeological Reconnaissance Survey and Field Inspections of Relocatable Over-the Horizon Radar Sites on Guam, Mariana Islands, Micronesia*. Prepared for Wilson Okamoto and Associates, Inc., Paul H. Rosendahl, Ph.D., Inc. Hilo, HI.

Hokanson, Jeffrey H., J. David Kilby, Michael Church and Mary R. McCurdy

2008 *Cultural Resources Survey for a Perimeter Fence and Portions of the Munitions Storage Area, Andersen Air Force Base, Guam*. Prepared for Andersen Air Force Base. Engineering-environmental Management, Inc., Englewood, Colorado.

Kurashina, H., T. McGrath, and H. Manner

1986 *Archaeological Survey of Areas 1, 2, 1-A and 2-A at Northwest Field, Andersen Air Force Base and Naval Communication Area Master Station Western Pacific, Finegayan, Guam, Marianas Islands*. Prepared for Naval Facilities Engineering Command, Pacific, Pearl Harbor, Hawaii. Micronesian Area Research Center, University of Guam, Mangilao, Guam.

Mohlman, Geoffrey

2015 *Final Report Historic Inventory Survey Andersen Air Force Base, Territory of Guam*. Prepared for NAVFAC Marianas by Southeastern Archaeological Research, Inc.

Pacheco, T., T. Rieth, and R. DiNapoli

2020 *Archaeological Monitoring in Support of Finegayan Utilities and Site Improvements Phase I, Naval Computer and Telecommunications Station, Guam*. 4 Volumes. Prepared for Department of the Navy, Pacific Division, Naval Facilities Engineering Command, Pearl Harbor, Hawaii. International Archaeological Research Institute, Inc., Honolulu, Hawaii.

Welch, David J.

2010 *Archaeological Surveys and Cultural Resources Studies on the Island of Guam in Support of the Joint Guam Build-Up Environmental Impact Statement VOLUME 1: NARRATIVE. Contract N62742-06-D-1870, Contract Task Order No. 0010*. Prepared for Department of the Navy, Naval Facilities Engineering Command, Pacific Pearl Harbor, Hawai'i

Yee et al 2004 Yee, S., D. Welch, and J. Allen

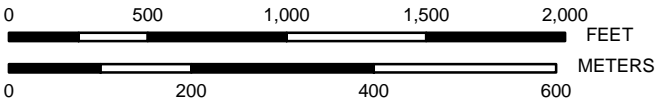
2004 *Archaeological Overview Survey Report for Andersen Air Force Base, Guam*. Prepared for 36 CES/CEVN, AAFB, Guam and Earth Tech, Inc., Honolulu, HI. Prepared by International Archaeological Research Institute, Inc. Honolulu, HI.



FIGURE 1



Camp Blaz - J-017-V, Waterline Interconnect  
- PA Memo - Construction Area



PREPARED BY:  
Naval Facilities Engineering Command Pacific Division  
Guam Program Management Office  
DATE: 15 Jul 2022



Coordinate System: Geographic  
Projection: N/A  
Datum: D WGS 1984

Legend

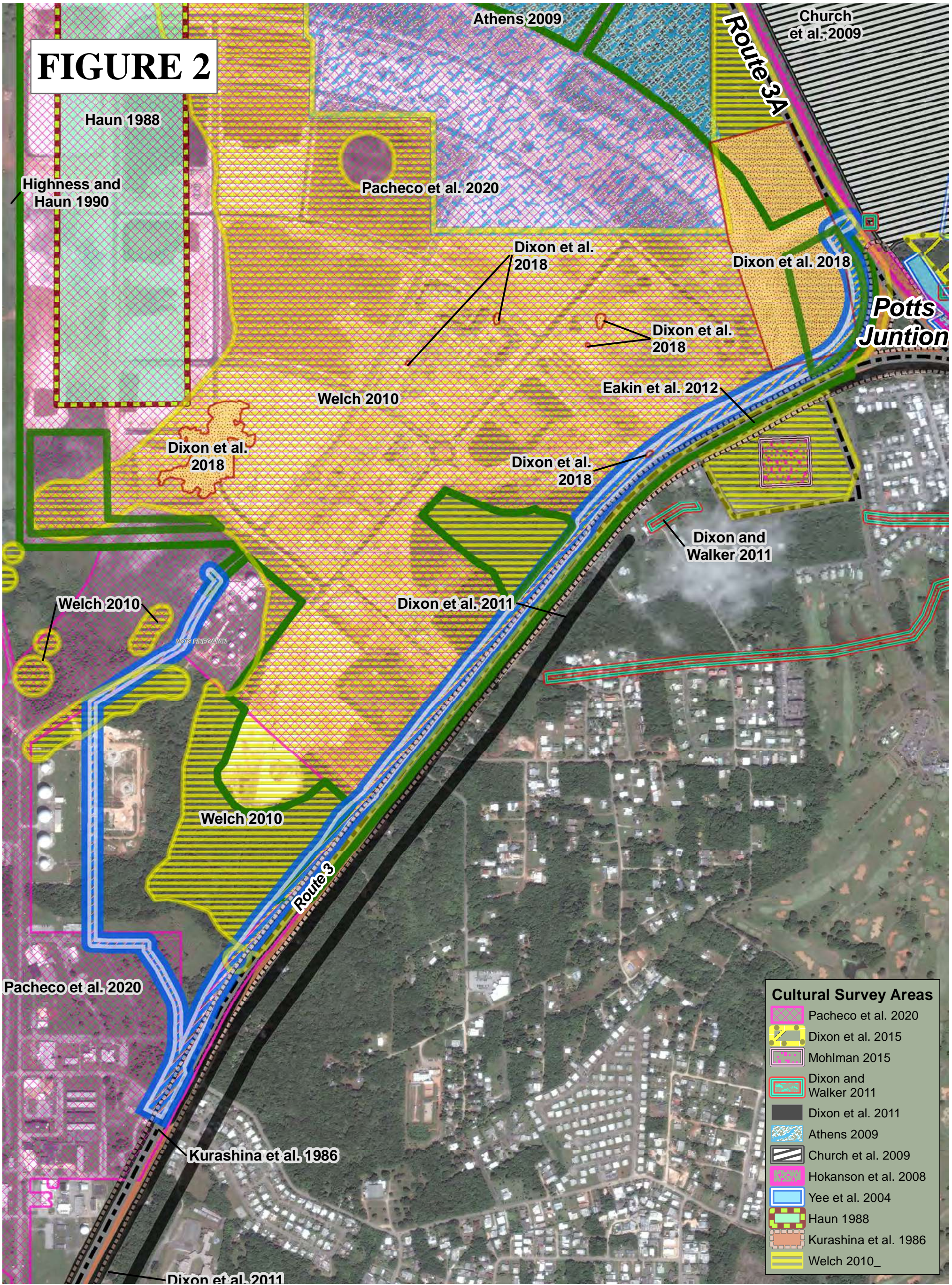
- J-017-V Waterline Interconnect - APE
- Sinkhole area not included in the J-001B PA memo (per the 2017 PA memo)
- PA Memo Area J-001B (2017)
- J-001B (U&SI) Construction Footprint
- Military Installations

MAMIZU APE  
J017-V - 29.2 ac.



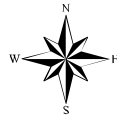
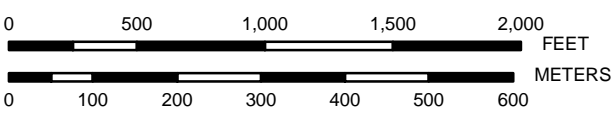


FIGURE 2



- Cultural Survey Areas**
- Pacheco et al. 2020
  - Dixon et al. 2015
  - Mohlman 2015
  - Dixon and Walker 2011
  - Dixon et al. 2011
  - Athens 2009
  - Church et al. 2009
  - Hokanson et al. 2008
  - Yee et al. 2004
  - Haun 1988
  - Kurashina et al. 1986
  - Welch 2010\_

Camp Blaz - J-017-V, Waterline Interconnect  
- PA Memo - Survey Areas



PREPARED BY:  
Naval Facilities Engineering Command Pacific Division  
Guam Program Management Office  
DATE: 15 Jul 2022



Coordinate System: UTM Zone 55 North  
Projection: Transverse Mercator  
Datum: D WGS 1984

Legend

- J-017-V Waterline Interconnect - APE
- J-001B (U&SI) Construction Footprint
- Military Installations





# Military Relocation PA Memo Comment Form

2022

If submitting via **e-mail**, scan and send to: [criwebcomment@navy.mil](mailto:criwebcomment@navy.mil)

If submitting via **postal mail**, send to:

Attn: CRI Web Comments  
Code EV23, NAVFAC Pacific  
258 Makalapa Drive, Suite 100  
JBPHH, Hawaii 96860-3134

Submitted comments will be posted on the Navy's Cultural Resources Information (CRI) web site. Information presented on the CRI web site is considered public. The sections highlighted in **red** are required to be completed in order for a comment to be posted.

## Privacy Act Statement

Personal information will only be used to contact you regarding the comments you submit. This information will only be shared with another government agency if your inquiry relates to that agency, or as otherwise required by law. We will not create individual profiles or give your information to any private organization. While you must provide a valid e-mail address or postal address, please **DO NOT** include personally identifying information such as a social security number.

By submitting this comment form, you agree not to include content that is offensive in nature, such as profanity, personal attacks on individuals, and racist or abusive language.

**PROJECT: J-017-V Waterline Interconnect DESIGN STUDIES, Marine Corps Base Camp Blaz (MCBCB), Finegayan, Guam**

**SUBJECT: PA Memo#1**

**Date:** \_\_\_\_\_

**Name:** \_\_\_\_\_

**CRI User Name** (if you don't want your real name to be posted with your comment on the CRI web site):

\_\_\_\_\_

**E-Mail Address:** \_\_\_\_\_

**and/or**

**Postal Mail Address:** \_\_\_\_\_

**COMMENTS:** \_\_\_\_\_

\_\_\_\_\_

\_\_\_\_\_

\_\_\_\_\_

\_\_\_\_\_

\_\_\_\_\_

\_\_\_\_\_



This image shows a single sheet of white paper with horizontal ruling lines. The lines are evenly spaced and run across the width of the page. There are no margins, text, or other markings on the paper.